

# drew & cole<sup>®</sup>

SWITCHED ON LIVING

## DIGITAL KETTLE PRO



## User's Manual

Register your product at  
**[drewandcole.com/support](https://drewandcole.com/support)**  
and visit us for...

FAQs



Videos



Recipes



Support



Join our community..



# Index

## Topic

---

Important safeguards	03
Box contents	07
Features	07
Preparing your kettle base	08
Using your kettle	09
Descaling your kettle	14
Care & cleaning	15

# Important Safeguards

**When using electrical appliances, basic safety precautions should always be followed including the following:**

## IMPORTANT SAFEGUARDS SAFETY INSTRUCTIONS

Read these instructions for use carefully before using your appliance for the first time and keep them to hand for future reference.

- This appliance is for household use only.
- The appliance may be used by persons (including children from 8 years on) with reduced physical, sensory or mental capabilities, or lack of experience or knowledge, if they have been given supervision or instruction concerning the use of the appliance. Children must be supervised to ensure they do not play with the appliance or any parts of the appliance or the packaging. Do not leave the appliance unattended, when it is in reach of young children. Even cleaning and user maintenance may not be performed by children without supervision.
- Do not attempt to use this appliance for any other than the intended use, described in this booklet. Any other use, especially misuse, can cause severe injuries or damage by electric shock, heat or fire.
- Do not leave the appliance unattended, when it is connected to the power supply.
- Any operation, repair and technical maintenance of the appliance or any part of it (e.g. exchanging any permanently mounted parts) other than described in the instructions may only be performed at an authorised service centre. Please contact the customer Service Team.
- If the kettle is over filled, boiling water may be ejected.
- If the supply cord is damaged, it must be replaced by the manufacturer, its service agent or similarly qualified persons in order to avoid hazard.
- The appliance is only to be used with the kettle base provided.
- Keep the appliance and the power cord out of the reach of children aged less than 8 years.
- Avoid spillages on the connector.
- Don't use the kettle for any purpose other than heating water.
- The heating element surface is subject to residual heat after use.
- Do not operate the kettle on an inclined plane.

# Important Safeguards (cont...)

## GENERAL SAFETY INSTRUCTIONS

Do not operate or store the appliance in humid or wet areas or outdoors. This appliance is NOT intended for use in boats or moving vehicles. Do not use any accessories, attachments or spare parts not recommended by the manufacturer. Damaged or unsuited parts could cause cracks, distortions or leakage of hot water. Do not operate the appliance when the appliance or any part of it is likely to be damaged to avoid risk of fire, overflow, heat, electric shock or any other damage and/or injuries to persons.

Check the water kettle regularly for any leakage. However, due to condensation, small amounts of moisture on the base may occur. This is normal. Regularly check the power base and power cord for proper operation. The pins of the plug and connectors in the middle of the power base and at the bottom of the kettle must be smooth and clean without any discolouration. Do not operate the appliance when any part of it is likely to be damaged or is not working properly.

Return the appliance to an authorised service centre for examination and repair, if the appliance is not operating properly or overheating, or was subject to inadmissible strain (e.g. overheating, mechanical or electric shock, moisture in the electrical connectors). Unplug the appliance immediately, when a severe problem occurs during operation (e.g. water over flowing, overheating). Do not attempt to open or repair the appliance

on your own.

Operate the appliance on a well accessible, heat resistant, water resistant, stable, level, dry and suitable large table or counter. Do not place the appliance on inclined surfaces, where it can tilt, overflow, or fall. Ensure that the base will stand stable, before placing the kettle on it and operating the appliance beneath or below any heat-sensitive or moisture-sensitive materials, steam, heat or condensate. During operation keep the appliance in an appropriate distance of at least 20 cm on each side.

Do not place any clothes or tissues or other objects under on the appliance during operation, to avoid risk of fire, electric shock and overheating. Do not place the appliance near the edge of the table or counter.

Do not place the appliance or any part of it on or near hot surfaces (e.g. burner, heater, range or oven). The appliance is heated by built-in electric heating elements. Do not place any part of the appliance (e.g. power base or kettle) on a hot oven or range.

Do not leave the appliance unattended when connected to the power supply. Always unplug the appliance when it is not in use, and before moving or cleaning the appliance. Always leave the appliance to cool down before cleaning. Always ensure that the kettle is filled correctly and the exterior and the electric connectors of the kettle and power base are dry and clean, before placing the kettle onto the power base.

## Important Safeguards (cont...)

Do not overfill the kettle. Always observe the MAX filling mark in the interior of the kettle. Otherwise, hot water could splash and overflow, causing severe scalds. Always remove the kettle from the power base and remove the lid when filling the kettle. Do not preheat the kettle while it is still empty. Always ensure that there are at least 0.5 litres of water in the kettle before operation. Only use the appliance for heating clear water. Do not add any food or food additives. Do not fill with milk or any other beverages into the kettle. Do not place any foreign objects into the kettle. There is no warranty claim of the purchaser, if the damaged or defect of the appliance is caused by inappropriate treatment.

The lid can be opened easily by pressing the lid opening button. Do not force the lid open. Always close the lid before starting operations.

Do not use abrasive cleaners or cleaning pads for cleaning the appliance or any part of it. DO not clean the appliance with any chemicals (e.g. bleach). Do not use any hard or sharp-edged objects for operation or cleaning.

**DO NOT place the appliance or power cord in an automatic dishwasher.**

### IMPORTANT SAFEGUARDS FOR ELECTRICAL APPLIANCES

Carefully read all instructions before opening the appliance and save for future reference.

Place the appliance near a suitable

wall power socket and connect the appliance directly to a protected mains power supply with protective conductor (earth/ground) connected properly. For this, always unwind the power cord completely. Do not use any extension cord or multi-socket outlet. Ensure that the voltage rating of your mains power supply corresponds to the voltage requirements of the appliance (220-240V, 50/60Hz, AC, rated for at least 10A).

The power outlet socket must be installed separately to avoid interference with other appliances.

Do not let the plug or power cord hang over the edge of the table or counter. Ensure that no one will pull the appliance by the power cord or entangle in the power cord. Always grasp the plug to disconnect the power cord. Do not touch the power plug or appliance with wet hands while the appliance is connected to the mains power supply.

Always unplug the appliance and remove the kettle before moving or cleaning the power base. Do not leave the power base unattended when it is connected to the power supply.

The power cord may not touch hot surfaces or sharp edges. Do not place the appliance on a power cord. If the power cord is obviously damaged and/or gets hot during operation, replace the power cord completely. DO NOT attempt to repair any power cord. To avoid risk of electric shock: Always immediately wipe dry spilled liquids and condensate. Do not place or immerse

## Important Safeguards (cont...)

the kettle, power base or power cord in water or any other liquid. DO not spill or drip any liquids on the power cord or exterior of the appliance.

**DO NOT place the appliance or any part of it in an automatic dishwasher.**

### **HIGH TEMPERATURES– RISK OF BURNS**

Do not overfill the kettle ( MAX 1.5L).

Always keep the lid closed during operation. Hot steam may escape from the lid and spout. Do not hold your hands, arms and/or face over the appliance during operation to avoid scalds.

Hot water could cause severe burns! Do not leave the appliance unattended, when it is in reach of young children, especially when the water within the kettle is hot!

When heating water to a preselected temperature, due to residual heat of the heating plate the water temperature could still rise even after the kettle

automatically switches off. When heating water for the immediate consumption or for preparing baby food, always ensure that the water has the desired temperature.

To avoid build up of pressure during heating, the lid of the kettle is not water tight. When moving the filled kettle, ensure to keep the kettle in an upright, level position to avoid injuries and damage due to spilled hot water.

Always leave the kettle to cool down before cleaning.

### **Need help? We're here for you.**

Please contact our Customer Services Team on:

**Phone:** 0344 800 0631 (UK) / 0412 132 998 (Ireland)

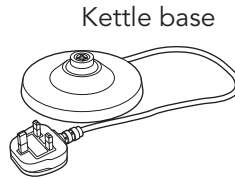
**Email:** [customercare@drewandcole.com](mailto:customercare@drewandcole.com)

**Visit:** [drewandcole.com/support](http://drewandcole.com/support) for FAQ's

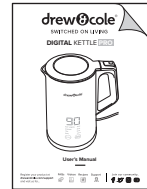
# Box Contents



Kettle

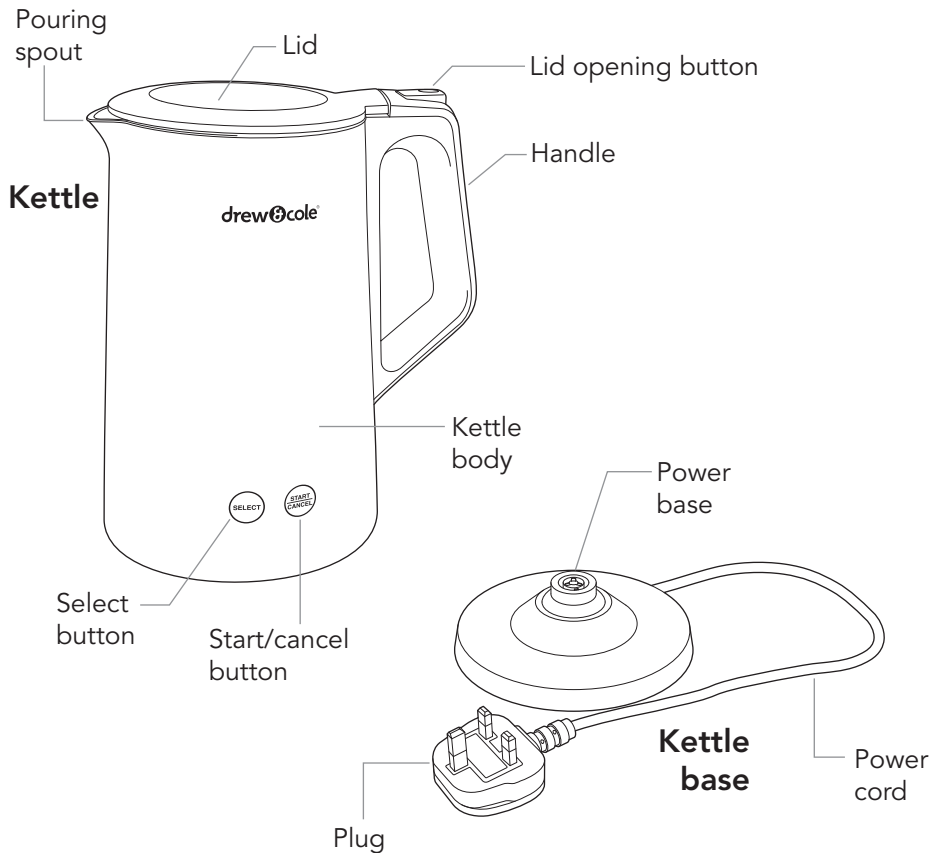


Kettle base



Instructions

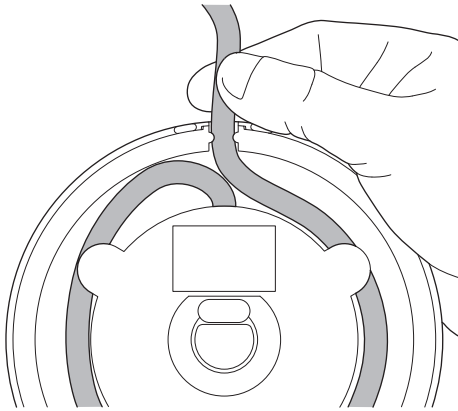
# Features



## Preparing Your Kettle Base

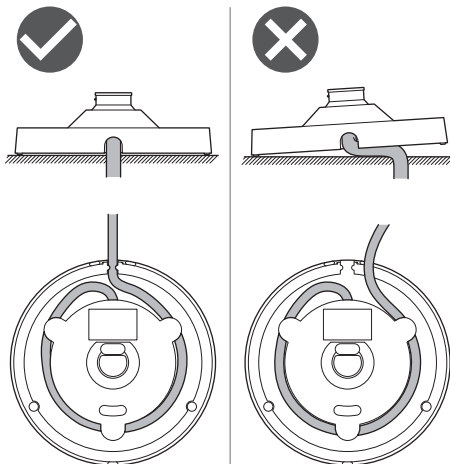
**IMPORTANT:** Place your kettle base on a flat, stable level heat and water resistant surface away from any hot surfaces or appliances. Never place any items under the kettle base.

Ensure you have approximately 20 cm clear around the sides of you kettle.



Unwind the desired length of power cord from the underside of the kettle base.

Push the cable between the two cable grips on the base after you have the correct length of cable.

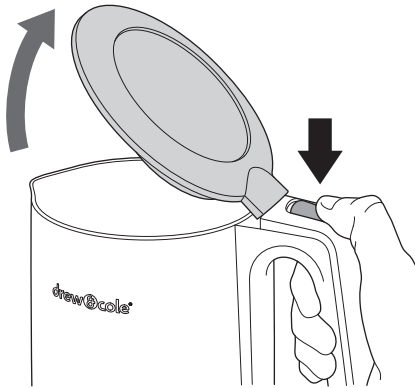


**IMPORTANT:** Regularly check the power cord is still slotted into the retaining clips on the kettle base.

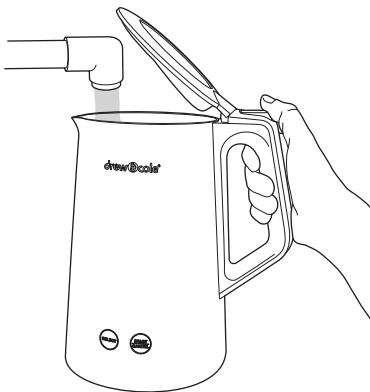
If the power cord is trapped under the kettle base your kettle will be unstable and could cause an accident.



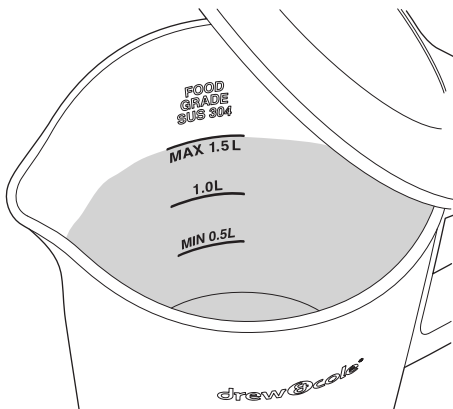
# Using Your Kettle



Press the lid release button down to open the lid of the kettle.

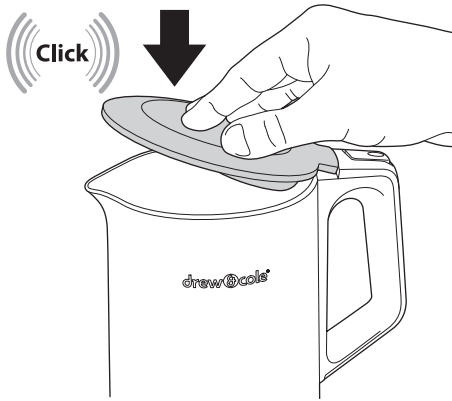


When your kettle is empty or the water level is low you will need to top up the water to your desired level.

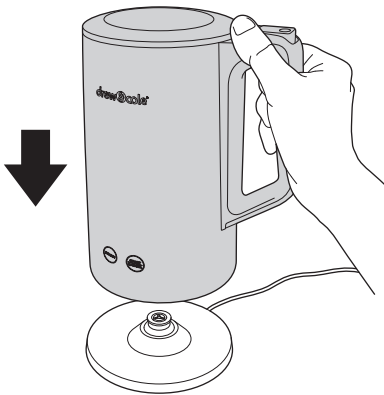


**IMPORTANT: DO NOT** over fill the kettle, only fill to the **MAX 1.5L** mark on the inside of the kettle.

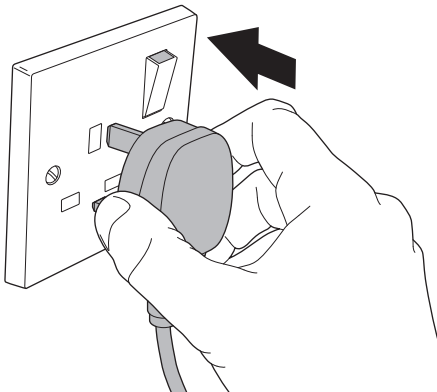
## Using Your Kettle (cont...)



Push down on the lid until it locks with a **'CLICK'**.

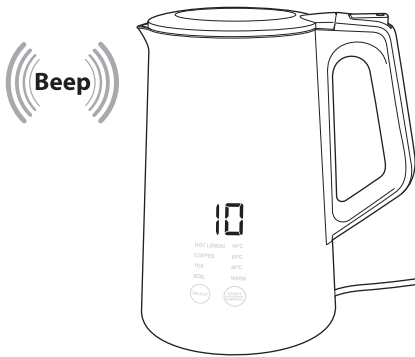


Now place the kettle on the kettle base.



Slot the plug on the end of the power cord into a mains socket and turn the power on at the socket if required.

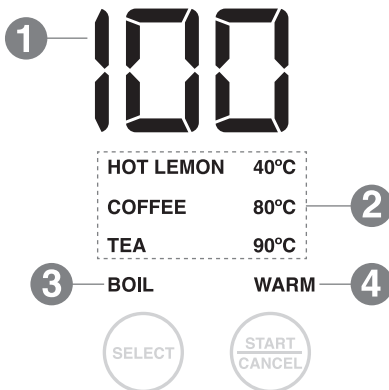
## Using Your Kettle (cont...)



When you turn the power on or place the kettle on the power base you will hear a '**BEEP**' and the kettle will automatically go into standby mode.

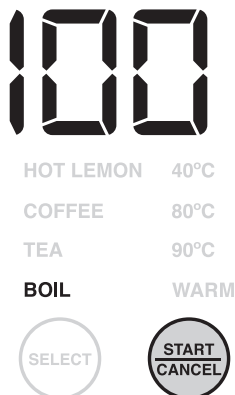
The kettles display will light up.

**Important:** If the kettle is in standby mode, press the **START / CANCEL** button to activate the display.



### Kettle display

1. This shows the temperature of the water inside the kettle.
2. These are preset functions for specific types of drinks.
3. This is the boiling function to boil the water to 100°C.
4. This is the warm function, this is used to keep the water at the preset temperatures for 30 minutes.



### Boiling function

Press the **START / CANCEL** button of the front of the kettle, after 3 seconds it will start to boil the water to 100°C.

## Using Your Kettle (cont...)



HOT LEMON	40°C
COFFEE	80°C
TEA	90°C
BOIL	WARM



HOT LEMON	40°C
COFFEE	80°C
TEA	90°C
BOIL	WARM



HOT LEMON	40°C
COFFEE	80°C
TEA	90°C
BOIL	WARM



### Preset function

Repeatedly press the **SELECT** button of the front of the kettle to select the preset boiling temperature you want to use.

After 3 seconds the selected preset will automatically start.

### Warm function

When you have selected the temperature you want, press the **SELECT** button for 2 seconds the **WARM** indicator on the bottom of the kettles screen will light up. After the kettle has reached the desired temperature it will reheat the water to keep it at the desired temperature for 30 minutes and then go into standby mode automatically.

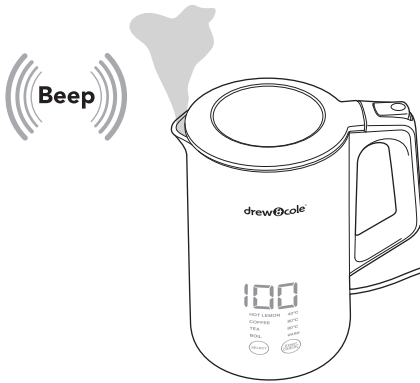
If you want to cancel the keep warm function, you can press **START / CANCEL** button to cancel and the kettle will enter the standby mode.

**Please note:** keep warm function is not available on the 100°C boil setting.

### Stopping the boiling process

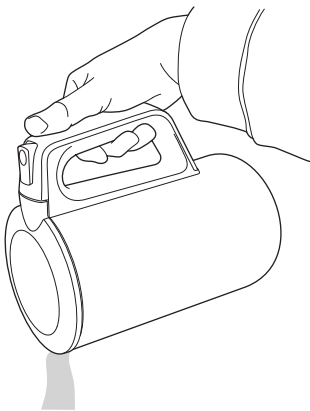
At any time during the boiling process you can press the **START / CANCEL** button to stop the boiling process.

## Using Your Kettle (cont...)



Once you have selected the temperature the kettle will automatically begin to boil.

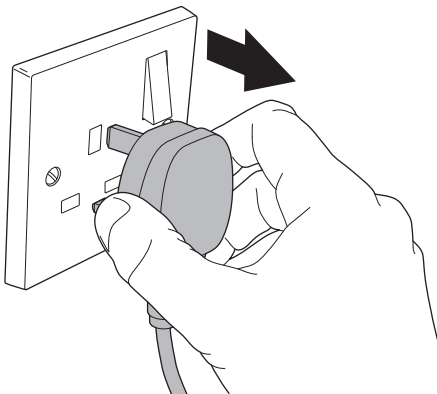
After the kettle has boiled you will hear 3 'BEEPS' showing that the kettle has reach the desired temperature and it will automatically go into standby mode unless you are using the warm function.



Lift the kettle of the kettle base and pour the water into the cup or other receptacle.

**NOTE: NEVER** open the lid when pouring the water as you may scald yourself.

**IMPORTANT:** If this is the first time you have used your kettle, empty the kettle and repeat this process two more times to ensure any residue has been removed from the inside of the kettle.

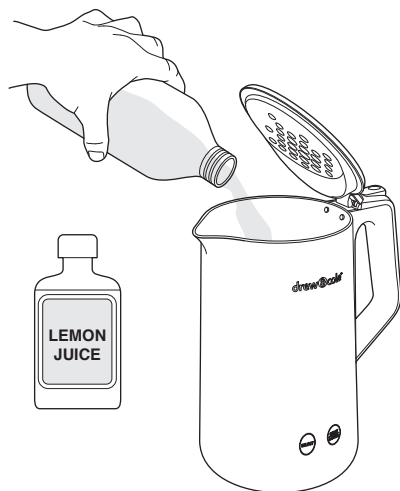


If you want to fully turn your kettle off, turn the power off at the mains socket and pull the plug out.

# Descaling Your Kettle



**Important:** After extended use, minerals in the water may form a deposit on the bottom of your kettle which will influence the performance of your kettle. So periodic descaling will be required. Please only use white vinegar as described in these instructions and only using the method described below.



Fill the kettle with 3 cups of lemon juice then add water up to MAX 1.5L mark on the inside of the kettle.

Allow the kettle to stand overnight.



Empty the solution out of the kettle.

Fill the kettle with fresh water to the maximum level and boil at 100, then pour the water away.

Repeat this process until all remnants of the lemon juice have been removed.

## Care & Cleaning

- **Always ensure your kettle base is unplugged from the mains and before performing any maintenance or cleaning tasks.**
- Always remove any spillages from the kettle base and kettle after each use.
- Wipe the outside of the kettle and the kettle base with a soft damp cloth then wipe with a dry cloth.
- **IMPORTANT: DO NOT** use chemicals or abrasive cleaners to clean the kettle or kettle base.
- After using your kettle, wipe the kettle base unit with a soft cloth to making sure any condensation or spillages are removed.
- **DO NOT IMMERSE THE KETTLE OR KETTLE BASE IN WATER OR ANY OTHER LIQUID.**
- **IF YOUR KETTLE IS NOT BEING USED, ALWAYS REMOVE THE PLUG FROM THE WALL SOCKET.**
- **WHEN THE KETTLE BASE IS BEING STORED, DO NOT FOLD THE POWER CORD.**

The product and its packaging have been manufactured from valuable materials that can be recycled. Recycling reduces the amount of refuse and helps to preserve the environment.

Dispose of the packaging at a recycling point that sorts materials by type. Make use of the local facilities provided for collecting paper, cardboard and light weight packaging.



Appliances marked with this symbol must not be disposed of along with normal household waste!

You are legally obliged to dispose of old appliances separately from household waste. Information about collection points where old appliances can be disposed of free of charge is available from your local authorities.



SWITCHED ON LIVING

Register your product at  
**drewandcole.com/support**  
and visit us for...

FAQs



Videos



Recipes



Support



Join our community...



Search: 'Digital Kettle Pro'  
to keep up to date with all  
the latest news, recipes  
and inspiration.

Distributed by:  
High Street TV, PO Box 7903,  
Corby, NN17 9HY

Model number: MK-SH15Powe508b  
V1-02/21

Please recycle our product and  
packaging where facilities exist.  
Check with your Local Authority  
or retailer for recycling in your  
country.

